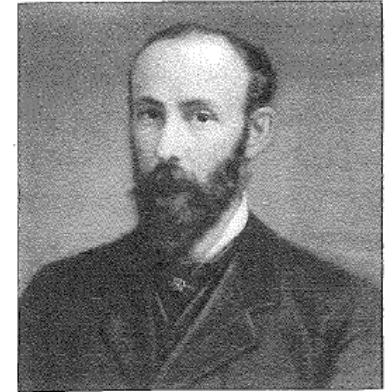


Brief history of **DODGE** the early years

- **June 1878**

- **Wallace Dodge** (29 yrs old) open factory on banks of St. Joseph river in Mishawaka Indiana. USA
- Manufacture of wood specialties
 - Saw bucks, chopping bowls, curtain poles and the famous “Magic Wagon Jack” – over 500,000 sold

Wallace H. Dodge, founder and first president 1878–1894.



- **June 1881**

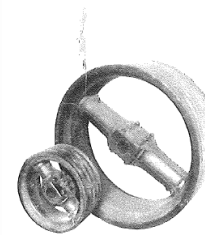
- Lightning strike burned factory to the ground
- Tradition has it that when he went to rebuild and buy iron pulleys for his new factory he was unable to obtain prompt delivery and he and his woodworkers developed the “**Independence**” **wood split pulley** and receive a patent on July 4th 1882

- **1884** W.B. Hosford – engineer, joined the company

- **1887** Mr. Hosford granted a patent on a split friction clutch

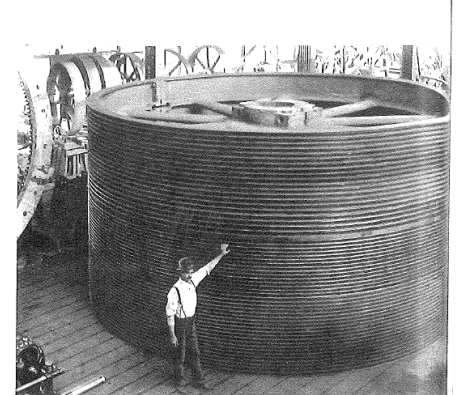
- **1890's** Dodge has a complete line of power transmitting equipment

- Babbitted bearings, split friction clutch, shaft couplings, collars, wood pulleys, rope drives (patented “American system” vs. English system) & cast iron gears



Wallace Dodge's first wood split pulleys removed from their shafts after 27 years of service for exhibition purposes.

An early rope sheave, 20 grooves for one size rope, 36 grooves for another size.



BALDOR®

A MEMBER OF THE ABB GROUP

BALDOR • RELIANCE®

DODGE **MASKA**

Ft. Smith, AR
Headquarters
Motor Plant
Drive Center
Southwestern Die Casting
Clarksville, AR
Ozark, AR
Westville, OK
Claremore, OK (Nupar)
Columbus, MS
St. Louis, MO
Oshkosh, WI

Athens, GA (RAG)
Gainseville, GA (RGG)
Kings Mountain, NC (RSN)
Stratford, ON CA (RST)
Bristol England

Asheville, NC (DAV) Sainte-Claire, QC
Marion, NC (DMA)
Belton, SC (DBT)
Greenville, SC (DGV, MGH)
Clio, SC (DCD)
Rogersville, TN (DRT)
El Salto, Jalisco, Mexico (DDG)
Shanghai, China



BALDOR®
A MEMBER OF THE ABB GROUP

Baldor Plant Locations

North America

Baldor Plant Locations

- 1 – Greenville, SC Plant
- 2 – Belton, SC Plant
- 3 – Asheville, NC Plant
- 4 – Rogersville, TN Plant
- 5 – Marion, NC Plant
- 6 – Clio, SC Plant
- 7 - Kings Mtn, NC Plant
- 8 – Gainesville, GA Plant
- 9 – Athens, GA Plant
- 10 – Clarksville, AR Plant
- 11 – Ozark, AR Plant
- 12 – Columbus, MS Plant
- 13 - Fort Smith, AR Motor Plant
- 14 - Fort Smith, AR Drives Plant
- 15 - South Western Die Casting Fort Smith, AR
- 16 – Westville, OK Plant
- 17 – Claremore, OK Plant
- 18 – Stratford, ON, CA Plant
- 19 - Sainte-Claire, QC CA Plant
- 20 - St. Louis, MO Plant
- 21 – Oshkosh, WI Plant
- 22 - Fort Smith, AR HQ
- 23 – Greenville, SC Office
- 24 – Guadalajara, Mexico Plant
- 25 – Shanghai China Plant
- 26 – Bristol England Plant



Served Industries

- **Aggregate**
 - Sand & gravel
 - Asphalt plants
 - Concrete plants
 - Rock Crushers
- **Bulk Material Handling**
- **Agriculture Equipment**
 - Grain Handling
 - Ethanol
- **Distribution & Baggage Handling**



DODGE *DGV Products & Plants Supported*

- **DODGE MAGNA Gear^{XT}R**

- 8 sizes
- 40+ ratios/size
- Parallel and Right angle



- **Torque Arm-** first produced 1949

- **TXT**

- Introduced 1988
- 14 sizes
- 1-4 ratios/size



- **TAII**

- Introduced 2000
- 12 sizes
- 5 ratios/size



- **MTA**

- Introduced 2008
- 3 sizes
- 12-14 ratios/size



- **Accessories**

- Bushing kits
- Anti-rotation backstops
- Belt guards
- Drive shafts
- Screw conveyor adaptors



- **Maxum**

- 7 sizes
- 24 ratios/size



- **Quantis** - Belton Plant
 - Gears and pinions
 - Output hubs
 - Large Housings



- **TIGER²** - Belton Plant
 - Output hubs



- **Specialty Gearing** – Belton Plant
 - Gearing

- **CST** - Shanghai and Stratford plants
 - Gearing
 - Ring gears
 - Splined shafts



- **Hob Sharpening** – Clarksville Plant

Process Overview

- **Materials – Steel & Cast Iron**

- Turning
- Boring
- Reaming
- Tapping
- Hobbing
- Shaving
- Broaching
- Milling
- Heat Treating
- OD Grinding
- Hard Turning
- Honing
- Gear Grinding
- Assembly
- Painting & Pack



Typical Belt Conveyor Drive



Electric
Clutch / Brake
BALDOR•DODGE
Asheville, NC



Motor Mount
BALDOR•DODGE
Clio, SC



Shaft & Drum Pulley
BALDOR•DODGE
Clio, SC



Mounted Bearing
BALDOR•DODGE
Marion, NC



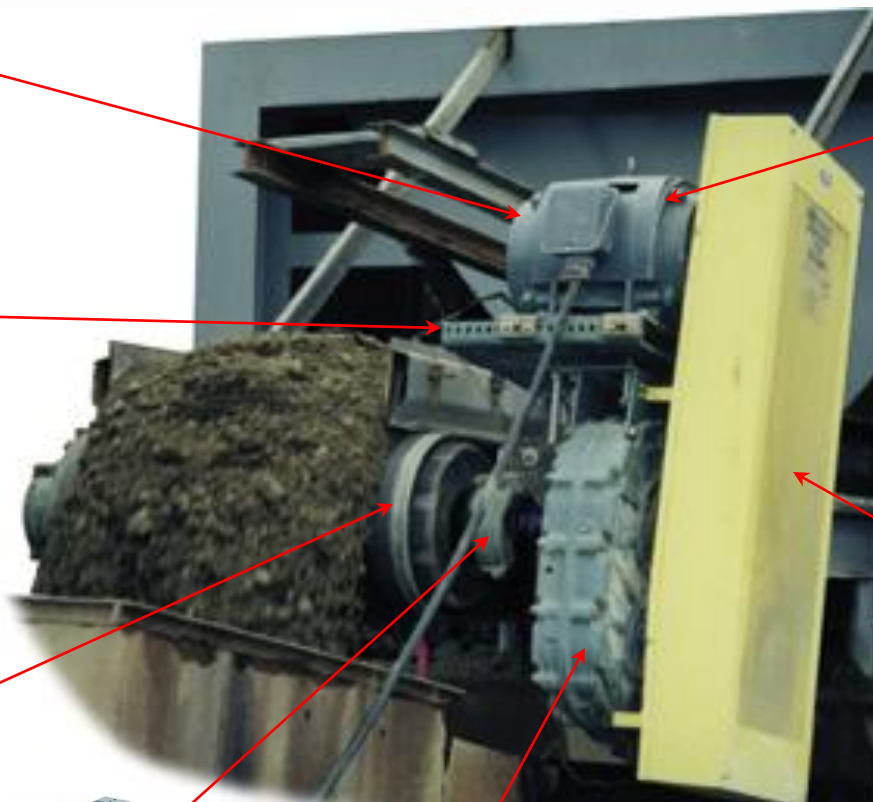
Torque-Arm
BALDOR•DODGE
Greenville, SC



Motor
BALDOR•RELIANCE
Athens, GA, Columbus, MS



Mechanical Drives
BALDOR•DODGE
Asheville, NC



BALDOR
A MEMBER OF THE ABB GROUP

Torque – Arm Applications



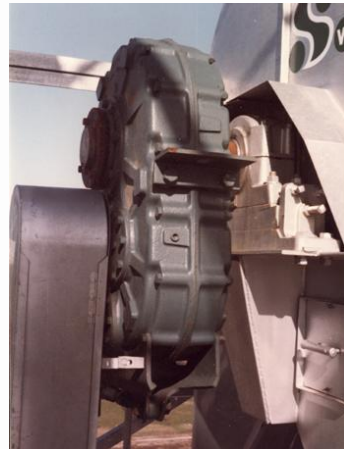
Lime Stone Plant



Waste Water Plant



Grain Conveyor



Offshore Platform



Motorized Torque Arm (MTA)



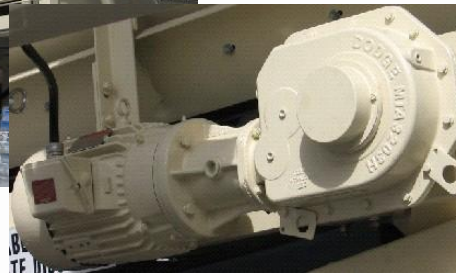
Glass Materials Plant



Asphalt Plant



Portable Concrete Plant



Typical MagnaGear Conveyor Drive

700 MagnaGear 400hp motor



Moment Coupling
BALDOR•DODGE
Asheville, NC



Mounted Bearing
BALDOR•DODGE
Marion, NC



Shaft & Drum Pulley
BALDOR•DODGE
Clio, SC



MagnaGear
BALDOR•DODGE
Greenville, SC

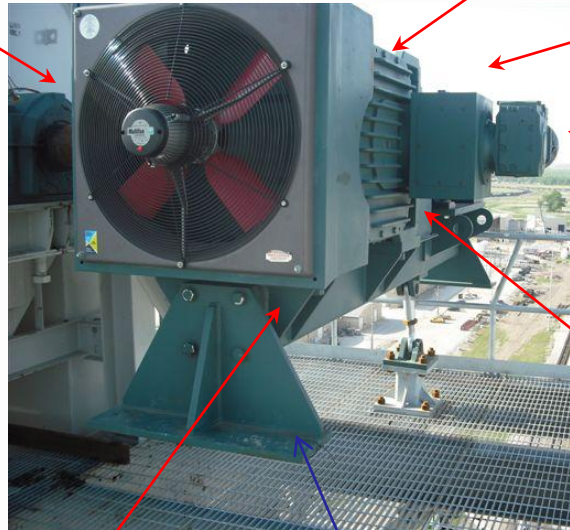


BALDOR•RELIANCE
Kings Mtn., NC



Creep Drive
BALDOR•DODGE
Quantis
MODULAR GEARING SOLUTIONS
Belton, SC

Creep drive used to drive system much slower than normal operation for inspection/maintenance



Swing Base

BALDOR•DODGE
Clio, SC

Note – shipping bracket
Unit is not bolted down, it is mounted on the shaft with a moment coupling. Total weight ~18,000 lbs
Tie rod in the background keeps the unit from rotating.



Couplings

BALDOR•DODGE
Asheville., NC

BALDOR
A MEMBER OF THE ABB GROUP

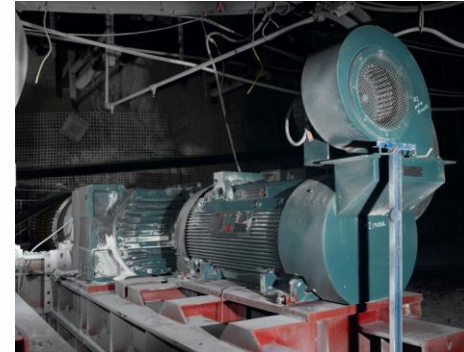
MagnaGear Applications



Aggregate Quarry
2 – 525k MagnaGear
w/300 Hp motors



Limestone Dryer
285K MagnaGear
w/60Hp motor



Underground Coal Mine
Main line belt
700K MagnaGear w/700Hp motor



Coal mine refuse belt
150K MagnaGear
w/75 Hp motor & swingbase



Aggregate Quarry
210K MagnaGear
with Backstop
& Swingbase



MagnaGear
525K Thru 920K Designed
with Planetary Output

BALDOR
A MEMBER OF THE ABB GROUP

CST Applications

Greenville Plant Manufactures Gearing Only

Motor CST



Yang Quan Coal Mine, China

3600 TPH (Tons/Hr), 4500 Hp



Control Start Transmission
2500K CST w/2,500Hp motor

BALDOR
A MEMBER OF THE ABB GROUP

Dodge Quantis Gearbox Applications

DODGE
MODULAR GEARING SOLUTIONS

Greenville Plant Manufactures Gearing & Large Housings

Gearbox



Offshore platform



Bakery



Food Processing Plant



"Carrots"



Las Vegas airport baggage handling

Truss Planer

MaltEurope - Brewery

